

BAYFIELD COUNTY

Snowmobile Map 2017/18

LEGEND

Snowmobile Trail Symbols

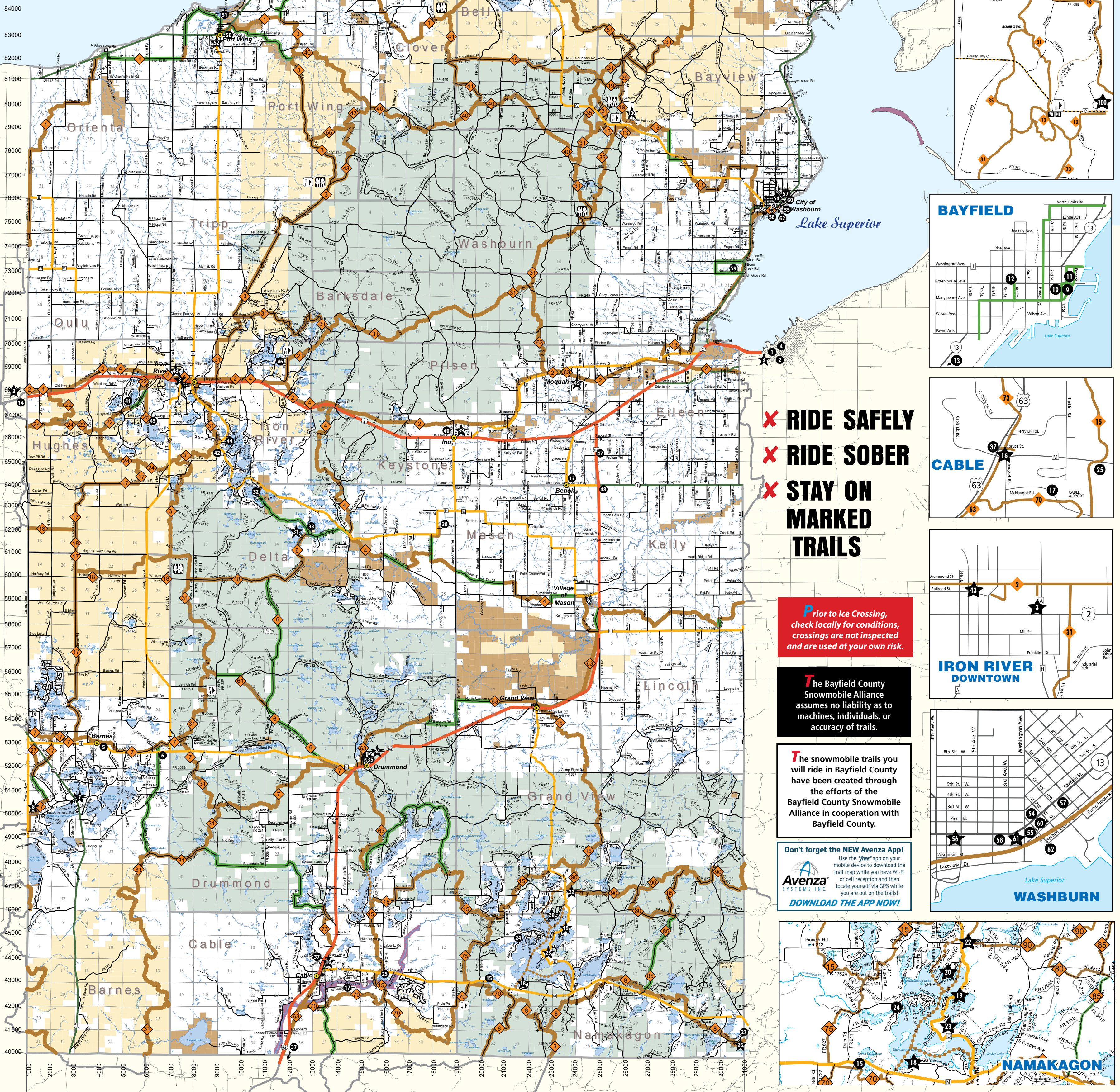
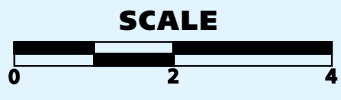
- Groomed Snowmobile Trail
- Plowed Road - Not Groomed
- Lake Trail
- Trail Segment not in Bayfield County

Roads

- Federal
- State
- County
- Town
- Forest
- Private

Other Symbols

- Unincorporated Villages
- Federal Land
- Apostle Islands National Lakeshore & Wild and Scenic River
- State Land
- County Land
- Red Cliff Reservation Boundary
- Township Border
- Lakes
- Rivers
- Sections
- 75000 Address Grid

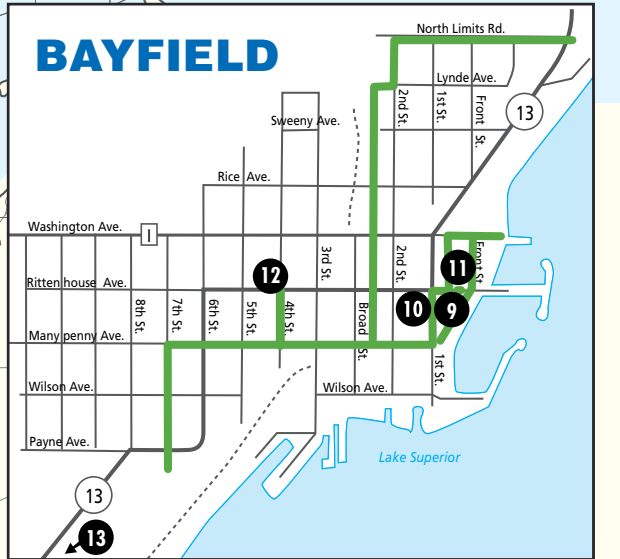
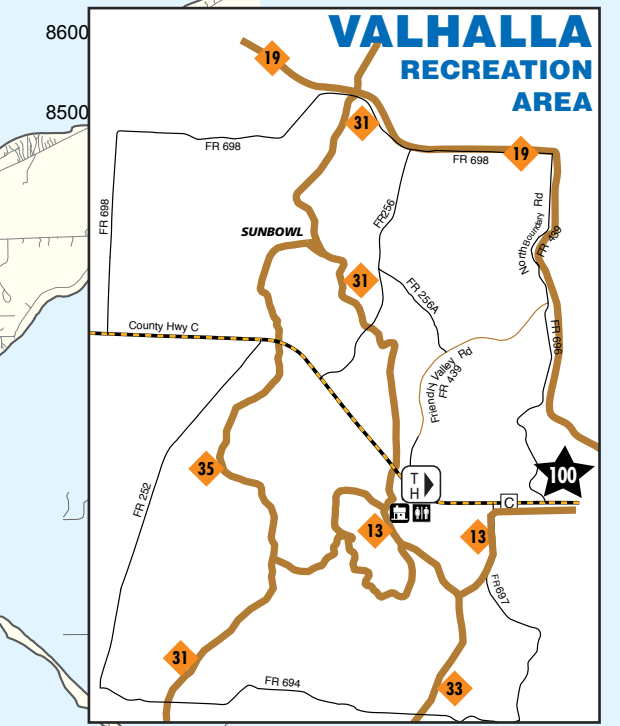


FOR EMERGENCY MEDICAL ASSISTANCE, DIAL 911.

Please provide your location look for the nearest addressing number sign and trail intersections to the nearest roadway.

55050

COUNTY RD.



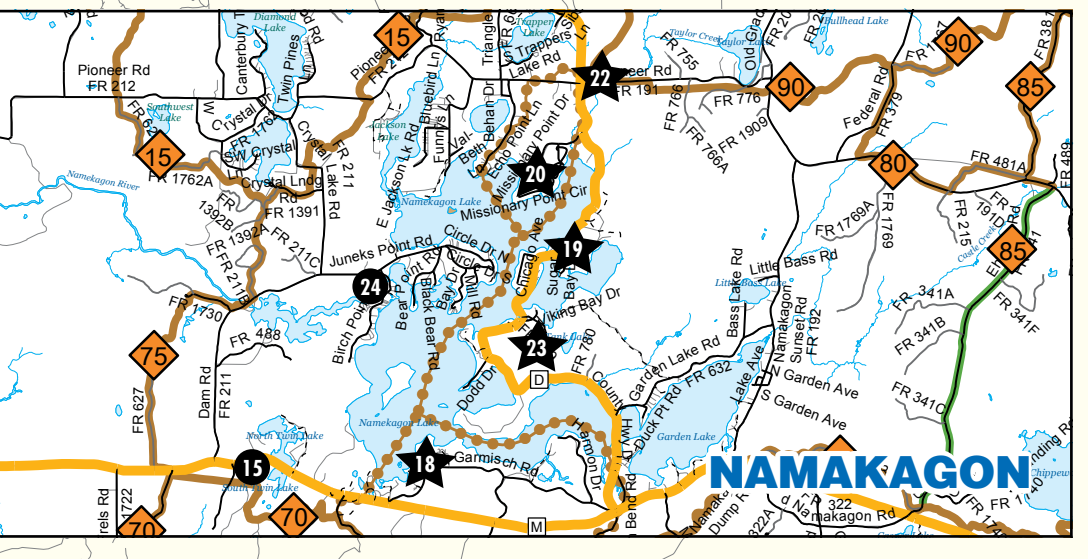
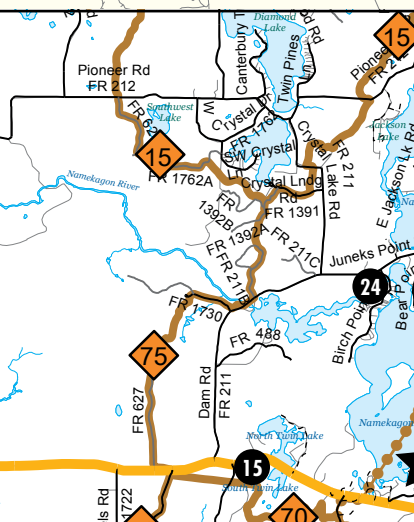
X RIDE SAFELY
X RIDE SOBER
X STAY ON MARKED TRAILS

Prior to Ice Crossing, check locally for conditions, crossings are not inspected and are used at your own risk.

The Bayfield County Snowmobile Alliance assumes no liability as to machines, individuals, or accuracy of trails.

The snowmobile trails you will ride in Bayfield County have been created through the efforts of the Bayfield County Snowmobile Alliance in cooperation with Bayfield County.

Don't forget the NEW Avenza App! Use the "free" app on your mobile device to download the trail map while you have Wi-Fi or cell reception and then locate yourself via GPS while you are out on the trails!



Stop by these businesses and express your thanks for their support!

- * = Gas Available
- 1 ASHLAND SUPER 8, Ashland
- 2 MEMORIAL MEDICAL CENTER, Ashland
- * 3 CENEX GAS & CONVENIENCE STORES, Ashland, Iron River & Brule
- 4 RIVER ROCK INN, Ashland
- 5 BARNES TRADING POST, Barnes
- 6 DOORNS INN, Barnes
- * 7 JIM'S BAIT & CONVENIENCE STORE, Barnes
- * 8 PJ'S CABIN STORE, Barnes
- 9 THE BAYFIELD INN, Bayfield
- 10 MORTY'S PUB, Bayfield
- 11 PIER PLAZA & BAY FRONT INN, Bayfield
- * 12 SUPERIOR PETROL LLC, Bayfield
- 13 WOODSIDE COTTAGES, Bayfield
- 14 KRO BAR AND GRILL, Brule
- 15 AMMO'S EVERGREEN TAVERN, Cable
- * 16 CABLE TRIPLE G, Cable
- 17 DRUMMING WOODS BED AND BREAKFAST, Cable
- * 18 LAKEWOODS RESORT & SPORTS BAR, Cable
- * 19 THE LOON SALOON, LLC, Cable
- * 20 MOGASHEEN RESORT, Cable
- 21 NAMAKAGON TRAIL GROOMERS, Cable
- * 22 PIONEER BAR, Cable
- 23 PLA-MOR BAR & RESTAURANT, Cable
- 24 STAUEMEYER'S FOUR SEASONS RESORT, Cable
- 25 TELEMAR CONDOMINIUMS, Cable
- * 26 CLAM LAKE JUNCTION, Clam Lake
- 27 DEB'S Y-GO-BY, Clam Lake
- 28 LITTLE NIKKI'S, Cornucopia
- 29 O'BRYON'S VILLAGE INN, Cornucopia
- * 30 FROSTY'S OUTPOST, Delta
- * 31 FLYING EAGLE RESORT, Delta
- 32 PINE POINT LODGE, Delta
- * 33 SCENIC DRIVE RESORT, Delta
- * 34 BEAR COUNTRY, Drummond
- 35 MJ'S MILL POND, Drummond
- 36 M&M'S Y-GO-BY, Gordon
- 37 RUNAMUK RIDES, Hayward & Cable
- 38 WOODY'S FOOD & SPIRITS, Herbster
- 39 INO BAR & GRILL, Ino
- 40 TRAILS END LODGE, Ino
- 41 BIRCH GROVE CAMPGROUND BAR & GRILL, Iron River
- 42 HYDE'S ON BUSKEY BAY, Iron River
- * 43 IRON RIVER AUTO PARTS, Iron River
- 44 THE SPOT SUPPER CLUB AND RESORT, Iron River
- 45 TOP O'THE MORN, Iron River
- 46 TRI LAKE TIMBERS, Iron River
- 47 LULICH IMPLEMENT, INC., Mason
- 48 NORTHLAND LAWN, SPORT & EQUIPMENT, Mason
- * 49 SELL'S PINE CREEK PIT STOP, Moquah
- 50 HOB'S SOUTH SHORE SALOON, Port Wing
- 51 HOLIDAY PINES RESORT, Port Wing
- * 52 JOHNSON'S STORE, Port Wing
- 53 LEGENDARY WATERS RESORT & CASINO, Red Cliff
- 54 BLUE WATER REALTY, Washburn
- 55 COCO ARTISAN BREADS & PASTRIES, Washburn
- * 56 HOLIDAY GAS STATION, Washburn
- 57 NAPA AUTO PARTS, Washburn
- 58 PATSY'S BAR & GRILL, Washburn
- 59 SPARKY'S BAR & GRILL, Washburn
- 60 WASHBURN HARDWARE & SPORT, Washburn
- * 61 WASHBURN IGA, Washburn
- 62 THE WASHBURN INN, Washburn
- * 100 VALHALLA VIEW PUB 'N' GRUB, Washburn
- * 63 STAR NORTH, Cornucopia

Rights to all information contained on the Bayfield County map are reserved by Bayfield County. No information may be reproduced in any form without the written consent of Bayfield County. Cartography by: Bayfield County Land Records Department. © 2016.

©2016. This map is produced and distributed by the Bayfield County Tourism Department in cooperation with the Bayfield County Forestry and Parks Department and the Bayfield County Snowmobile Alliance.